



PoolCop

Always. Better. Blue.



Essential Water Quality
Automation with Data Analysis

DATA + DISINFECTION

CORE



Eliminate guesswork, optimize disinfection, and provide predictive insights for precise and proactive pool care.

THE SMART ENTRY POINT FOR DATA-DRIVEN POOL CARE

Cutting-edge technology and advanced data analytics make PoolCop Core the ideal solution for professionals and owners seeking real-time insight and reliable disinfection—without full automation.

Designed for flexibility, PoolCop Core delivers actionable data, predictive alerts, and precise water quality management, adapting to every pool's unique needs.

Predict, Protect, Perfect

Data Acquisition & Monitoring

Pre-defined Inputs



WATER
LEVEL



WATER & AIR
TEMPERATURE



WATER
PRESSURE



FLOW
RATE



DIGITAL
INPUTS

Additional

Built-In Advantages

TA
ESTIMATION

DUAL
PUMP
MONITORING

DOUBLE
FILTRATION
FLOW RATE
& PRESSURE

4
MODBUS
CONNECTIONS

DMX
LIGHTING
READY

Automation

Pre-defined Relays



pH
CONTROL



DISINFECTION
CONTROL



REFILL
VALVE

Enhanced Connectivity



INTEGRATED
WIFI



INTEGRATED
ETHERNET



4G ROUTER
OPTION

Integrated Technology



CLOUD
TECHNOLOGY



SMART PROPRIETARY
ALGORITHMS

DISTINCT QUALITIES

ADVANCED DATA ACQUISITION:

The system provides continuous, high-precision monitoring with dedicated inputs for water chemistry, temperature, pressure, flow rate, and water level. Twelve additional inputs support optional sensors for cover status, drum level, flood detection, and other data points—delivering complete system awareness for pools of any complexity.

RELIABLE CONNECTIVITY:

WiFi, Ethernet, and 4G options guarantee a stable network and uninterrupted, real-time data flow to the cloud, keeping pool status visible at all times—even in demanding installation sites.

INTELLIGENT AUTOMATION & ALERTS:

Early leak detection, weather dependent refill management, overdosing security, anti-freeze protection, and filter cleaning notifications maximize safety and operational efficiency.



AUTOMATED WATER QUALITY:

Smart dosing for pH and disinfectant ensures consistently safe water. Proprietary algorithms provide Total Alkalinity estimation and predictive alerts for proactive maintenance.

DUAL PUMP MONITORING & DOUBLE FILTRATION:

Monitors two pumps and dual filtration circuits, optimizing flow rates and water pressure—essential for complex pool installations.

ENGINEERED FOR PERFORMANCE:

Next-generation processing power and expanded memory enable rapid data analysis and advanced system diagnostics. Ample capacity for analytics and reserved expansion slots anticipate future upgrades in pool care technology.

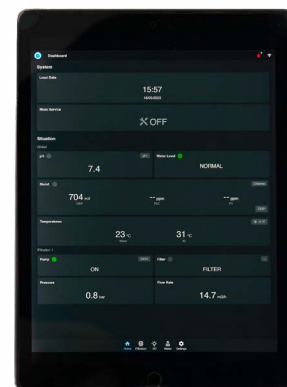
OPEN PLATFORM:

Fully adaptable for integration and future upgrades, compatible with third-party equipment, and suitable for both new pool builds and retrofits.



ONSITE CONFIGURATIONS

Pool settings are managed directly in the pump house using any connected device, via a direct link to the unit's built-in Wi-Fi.



MODULAR & SCALABLE

START SIMPLE, SCALE AS YOU GROW

For those who want a streamlined start, this system begins with essential disinfection control and data acquisition.

Enhance equipment control by adding a PoolCop Edge module with 8 powered relays, or opt for 15 relays with the optional Edge Plus extension board.

NOTE : obligatory to control variable speed pumps.

Expand further by adding a second Edge or Edge Plus unit to access up to 23 or 30 relays,



POOLCOP APPS



PROPOOLCOP

Tailored for professionals, ProPoolCop offers comprehensive data, remote control, and configuration management for all automated systems. Instantly access client portfolios, team scheduling, service planning, and historical analytics, while receiving actionable notifications and alerts for real-time diagnostics and seamless operations.



MYPOOLCOP

Created for pool owners, MyPoolCop features a streamlined interface displaying pool status—such as filtration pressure, water level, treatment, and temperature. Receive timely alerts for filter cleaning, leak detection, and low chemicals, along with intuitive access to pool and garden features, and easy uploads of water analysis results.



ADVANTAGES

POOL PROFESSIONALS

Targeting Hands-On Professionals

Maintains water quality while leaving equipment control and maintenance to the technician's expertise.

Pre-Visit Data Insights

Remote monitoring before arriving on-site allowing for better planning and efficiency.

Entry-Level Offering for Clients

For customers who don't yet see the need for full automation but still want healthier water with minimal effort.

POOL OWNERS

Controlled Water Quality

Ensuring safe and healthy swimming without manual adjustments.

Smart Insights

Pool owners gain real-time data on water conditions, while benefiting from the proactive service and expertise of their pool professional.

Future-Proof & Expandable

A simple, standalone solution today, with the option to expand into full automation at any time.

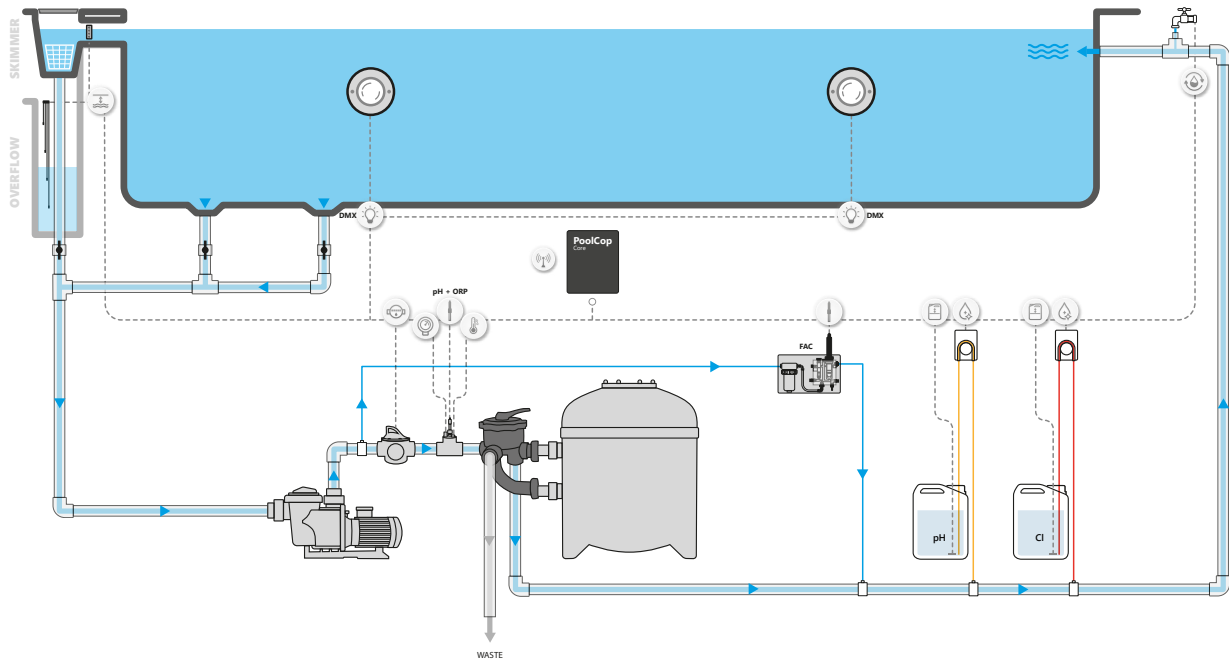


TECHNICAL SPECIFICATIONS

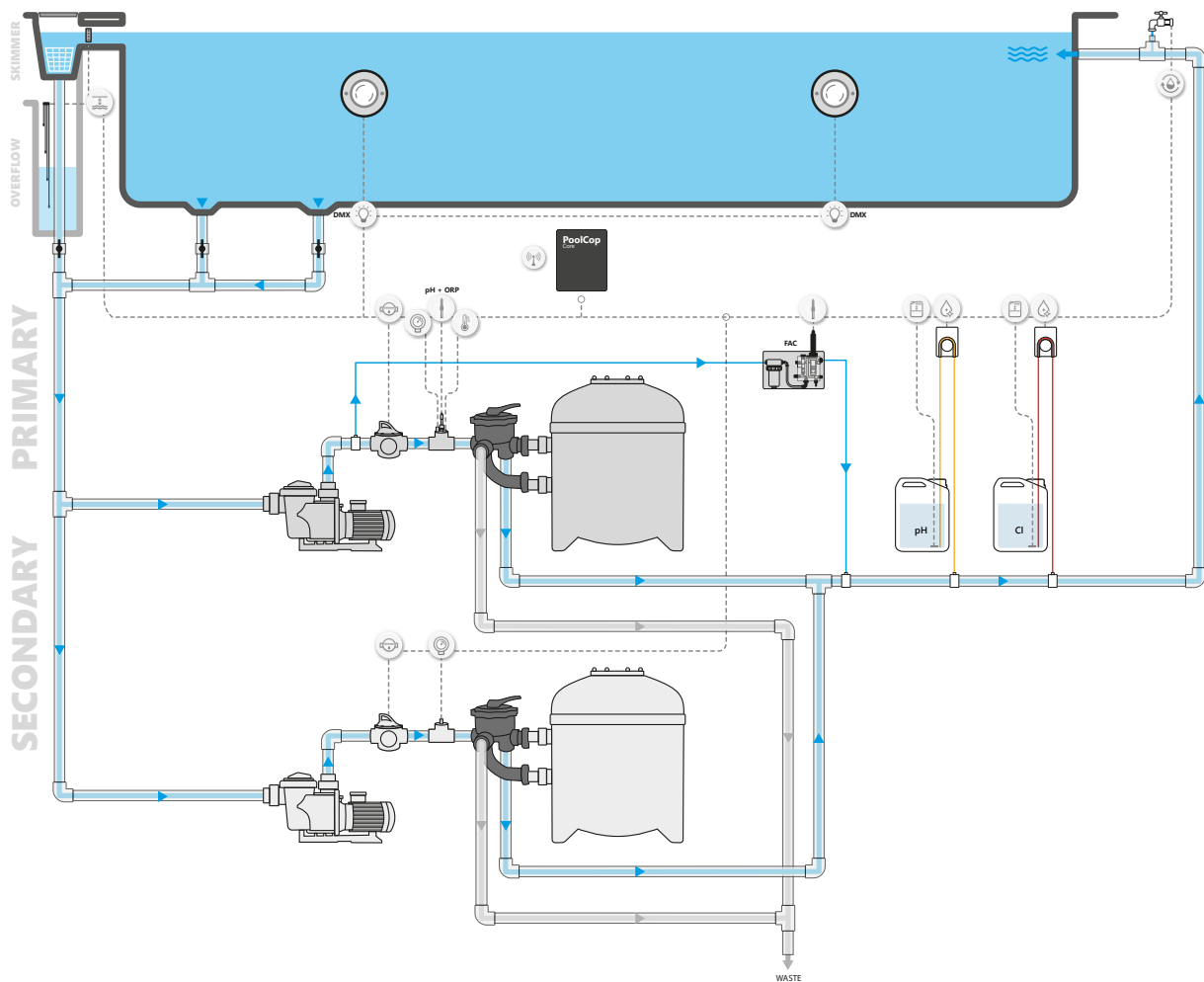
PoolCop Core

PoolCop Core 4G

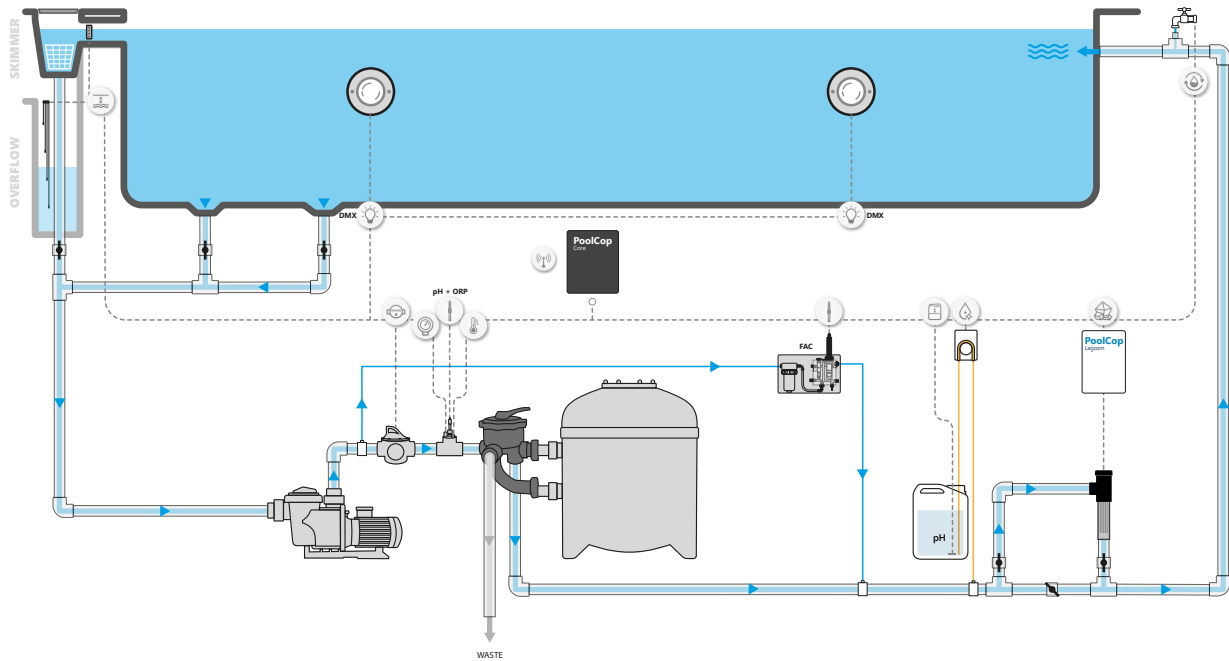
REFERENCE	100001	100002
COMPONENTS	<ul style="list-style-type: none">• PoolCop Core unit• Flow cell cap with water pressure, water temperature and pH-ORP sensor housings• Water pressure sensor• Water temperature sensor• Air temperature sensor• 2 antennas	<ul style="list-style-type: none">• PoolCop Core unit• Flow cell cap with water pressure, water temperature and pH-ORP sensor housings• Water pressure sensor• Water temperature sensor• Air temperature sensor• 2 antennas• 4G router
DIMENSIONS	270 x 320 X 110 mm (LxHxP) - 2.4 KG	
GUARANTEE	24 months	
DISPLAY AND CONTROLS	Via web interfaces and PoolCop Cloud	
POOLCOP CORE UNIT PROTECTION	IP54	
MAIN POWER SUPPLY	110 - 250 V.a.c. 50Hz-60Hz 10A	
POWER SUPPLY FLUCTUATIONS	+/- 10%	
MAINS FUSES	10A	
POWERED RELAY FUSES	4A	
OVERVOLTAGE CATEGORY	II	
USAGE	Indoor	
RELATIVE HUMIDITY	80% up to 31°C, linear decrease down to 50% at 45°C	
POLLUTION DEGREE	2	
ALTITUDE	2000m	
OPERATING TEMPERATURE	-5°C - 45°C (23°F - 113°F)	
PH / ORP SENSORS	530017 for Chlorine or Bromine - 530018 for Electrolysis	
MEASUREMENT RANGES	Air temperature: -30°C - 65°C (22°F - 149°F) Water pressure: -0.9 - 2.50 bars (-13 - 36 psi) Water temperature: 0 - 60° (32°F - 140°F) Water level: very high - high - normal - low pH S.U.: 4-14 ORP/Redox: 0 to 999mV Consumables level: normal - low	
PROGRAMMABLE RELAYS	pH: 1 relay, 0-250V.a.c. 4A Disinfection: 1 relay, 0-250V.a.c. 4A	
PROGRAMMABLE INPUTS	12 potential free, open/closed action	
COMMUNICATION PORTS (MODBUS & DMX)	4 x ModBus, 1 x DMX : RS485	
COMPLIANCE, ACCREDITATION, CERTIFICATION	CE	
INSTALLATION COMPATIBILITY	New construction, renovation, or upgrade Residential and commercial pools and spas	
COMPATIBLE OPTIONS	<ul style="list-style-type: none">• Water level kit• Treatment packs: chlorine and salt• Poolcop edge extension module• Flow meter• Waste backup valve• Flooding detection• lot energy meter• Free available chlorine sensor• Free chlorine sensor• Total chlorine sensor• Panel assembly	



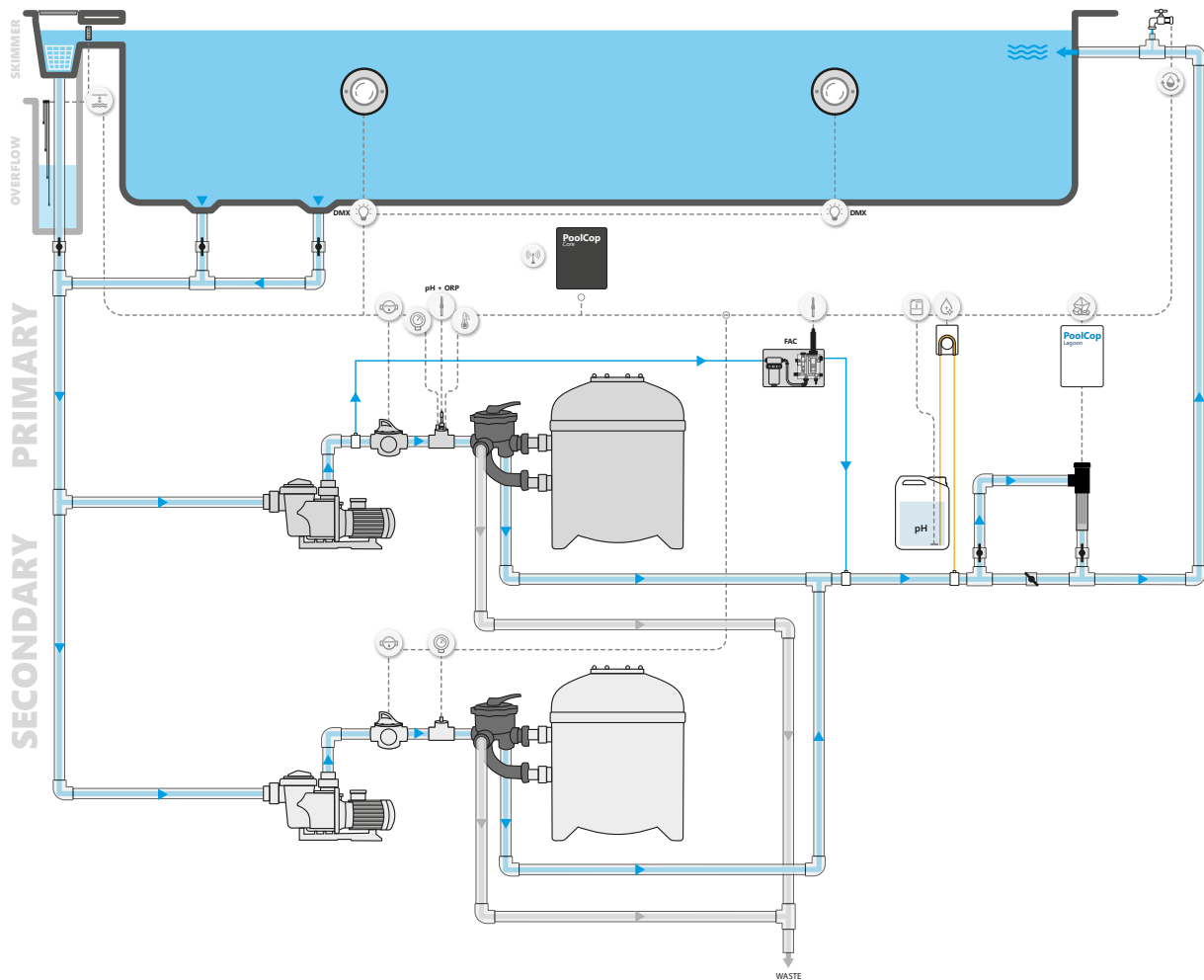
**POOLCOP CORE - SINGLE PUMP SET UP
WITH DATA AQUISION & CHLORINE DISINFECTION**



**POOLCOP CORE - DUAL PUMP SET UP
WITH DATA AQUISION & CHLORINE DISINFECTION**



**POOLCOP CORE - SINGLE PUMP SET UP
WITH DATA AQUISITION & SALT DISINFECTION**



**POOLCOP CORE - DUAL PUMP SET UP
WITH DATA AQUISITION & SALT DISINFECTION**

PoolCop

Always. Better. Blue.

PCFRPoolCop

PCFR SAS - 130 Boulevard du Nord, 84160 Cucuron, France
© PCFR SAS All Rights Reserved